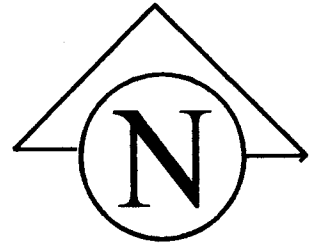


State of Wyoming Corner Record

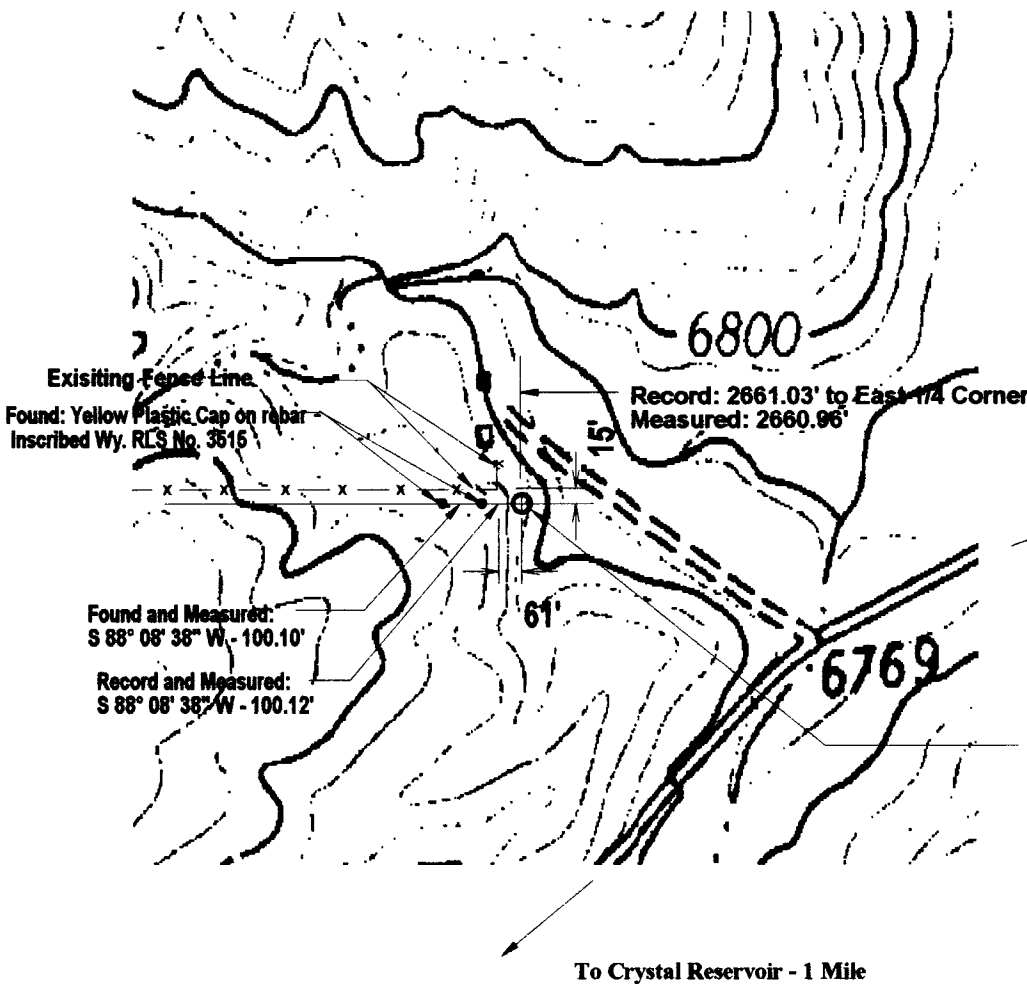
(In compliance with the *CORNER PERPETUATION AND FILING ACT*, Wyoming Statutes, 1977, Section 36-11-101, et. seq., and the rules and Regulations of the Board of Registration for Professional Engineers and Professional Land Surveyors).

Reverse side of this form may be used if more space is needed.

Record of original survey and citation of source of historical information (if corner is lost or obliterated). Description of corner monumentation evidence found and/or monument and accessories established to perpetuate the location of this corner. Sketch of relative location of monument, accessories, and reference points with course and distance to adjacent corner(s) (if determined in this survey). Method and rationale for reestablishment of lost or obliterated corner.



No Scale
Date Prepared :
October 19, 1995



LARAMIE COUNTY CLERK
 CHEYENNE, WY.
 '95 OCT 25 PM 1 22
 1721100

Found: 3/4" Rebar at location specified as center of section in Quitclaim deed recorded at Book 1328, Page 1621 of the records of the Laramie County Clerk, which was established under the direction of RLS No. 3515 during a survey of the property made at the request of the Cheyenne Board of Public Utilities.
Set: 3 1/4" aluminum cap mounted on a 2 1/4" Aluminum pipe over the existing 3/4" rebar, set in a mound of stone

Date of Field Work Sept. - Oct., 1995 Office Reference 9504 - BOPU Fenceline - Crystal Lake

CROSS INDEX DIAGRAM

	1	2	3	4	5	6	7	8	9	10	11	12	13	14	15	16	17	18	19	20	21	22	23	24	25
A																									
B																									
C																									
D																									
E																									
F																									
G																									
H																									
J																									
K																									
L																									
M																									
N																									
O																									
P																									
Q																									
R																									
S																									
T																									
U																									
V																									
W																									
X																									
Y																									
Z																									

Firm / Agency, Address

Cornerstone Surveying Company

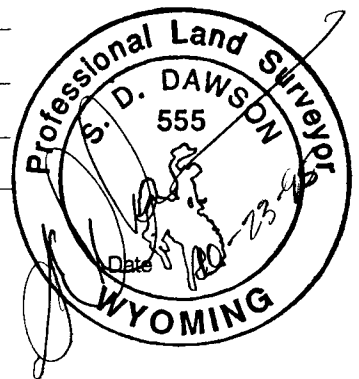
4005 Snyder Avenue

Cheyenne, Wyoming

Telephone Number 307 - 637 - 6958

This corner record was prepared by me or under my direction and supervision.

SEAL & SIGNATURE



Corner Name C 1/4

Section 25 T 14 N R 70 W : 6th P.M. Cross Index No. T 25

SBRPEPLS/PLSW: March 1994